

NAD 83 CHANNEL ANGLE POINTS		
∠ PT	X	Y
1	6262013.56	1874718.23
2	6258560.66	1874718.23
3	6258402.46	1874840.43
4	6258258.06	1875392.73
5	6259660.46	1877792.03
6	6259710.96	1877978.33
7	6259710.96	1884605.43
8	6259910.96	1884755.43
9	6260578.56	1884755.43
10	6261582.56	1883294.43
11	6263009.76	1882104.53
12	6263256.76	1881692.93
13	6263229.26	1881583.13
14	6263023.46	1881459.73
15	6262913.76	1881487.13
16	6262666.76	1881898.73
17	6262623.46	1882296.43
18	6261507.96	1883226.43
19	6260732.16	1884355.43
20	6260010.96	1884355.43
21	6259810.96	1884205.43
22	6259810.96	1877851.23
23	6258508.16	1875622.33
24	6258666.66	1875015.23
25	6258921.96	1874818.23
26	6262013.56	1874818.23

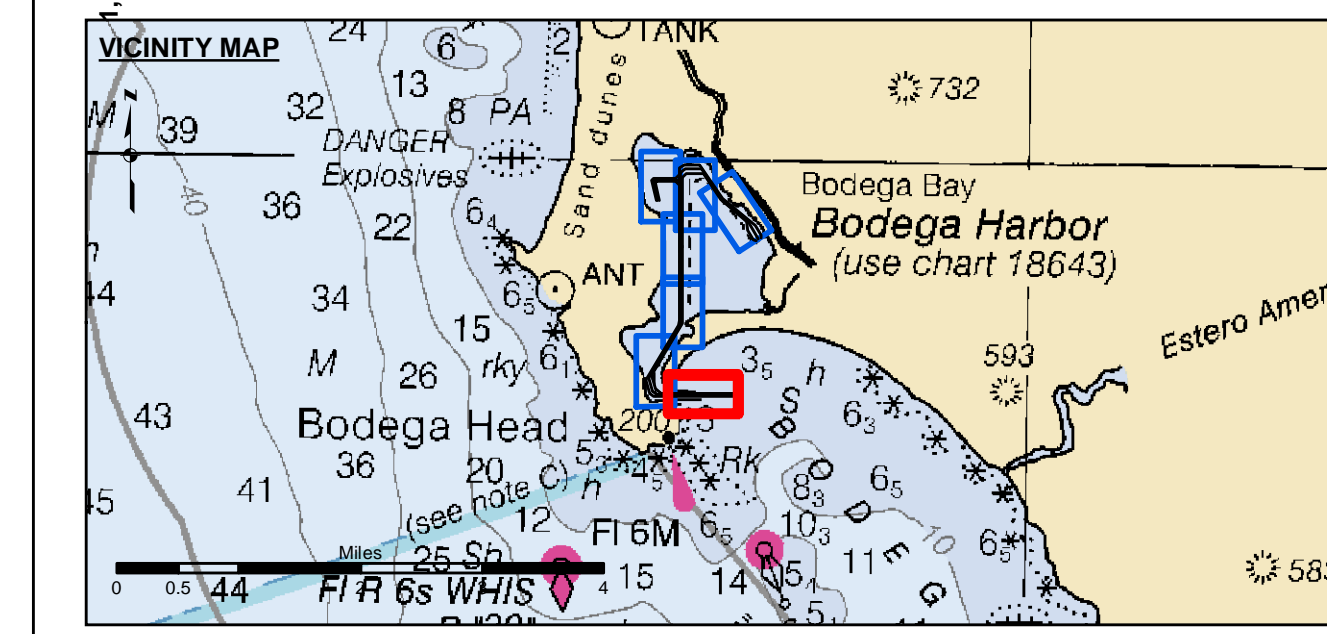
NAD 83 CENTERLINE ANGLE POINTS		
∠ PT	X	Y
C1	6262013.56	1874768.23
C2	6258741.36	1874772.73
C3	6258534.66	1874927.83
C4	6258383.16	1875507.53
C5	6259760.96	1877864.73
C6	6259760.96	1884405.43
C7	6259960.96	1884555.43
C8	6260655.36	1884555.43
C9	6261545.26	1883260.43
C10	6262655.46	1882334.83
C11	6263126.36	1881521.43

PRELIMINARY ISSUE
THIS PLAN ISSUED FOR
ADVANCE INFORMATION ONLY



DISCLAIMER
The United States Government furnishes this information as a service to the public. It is not intended to be used for any purpose other than that for which it was prepared. The United States Government makes no warranty, expressed or implied, concerning the accuracy, completeness, or timeliness of the information. The user of this information is responsible for its use. The United States Government shall not be liable for any damages, including consequential damages, arising from the use of this information. The user of this information is responsible for its use. The United States Government shall not be liable for any damages, including consequential damages, arising from the use of this information.

Prepared Under the Direction of	Surveyed By:	Chart Date:
LT COLONEL K. P. ARNETT		Sep 27, 2021
Plotted By:	Designed by:	
PDT	PDT	
Checked By:	Drawn by:	
PDT	PDT	



- Federal Navigation Channel
- Shoaling Area
- Placement Area
- Anchorage Area
- Wreck Area
- Submerged Wreck
- Angle Point
- Beacon, General
- Obstruction Point
- Navigation Buoy
- Navigation Buoy
- Shoalest Sounding*
- Contours**
- 12
- 11
- 10
- 9
- 8

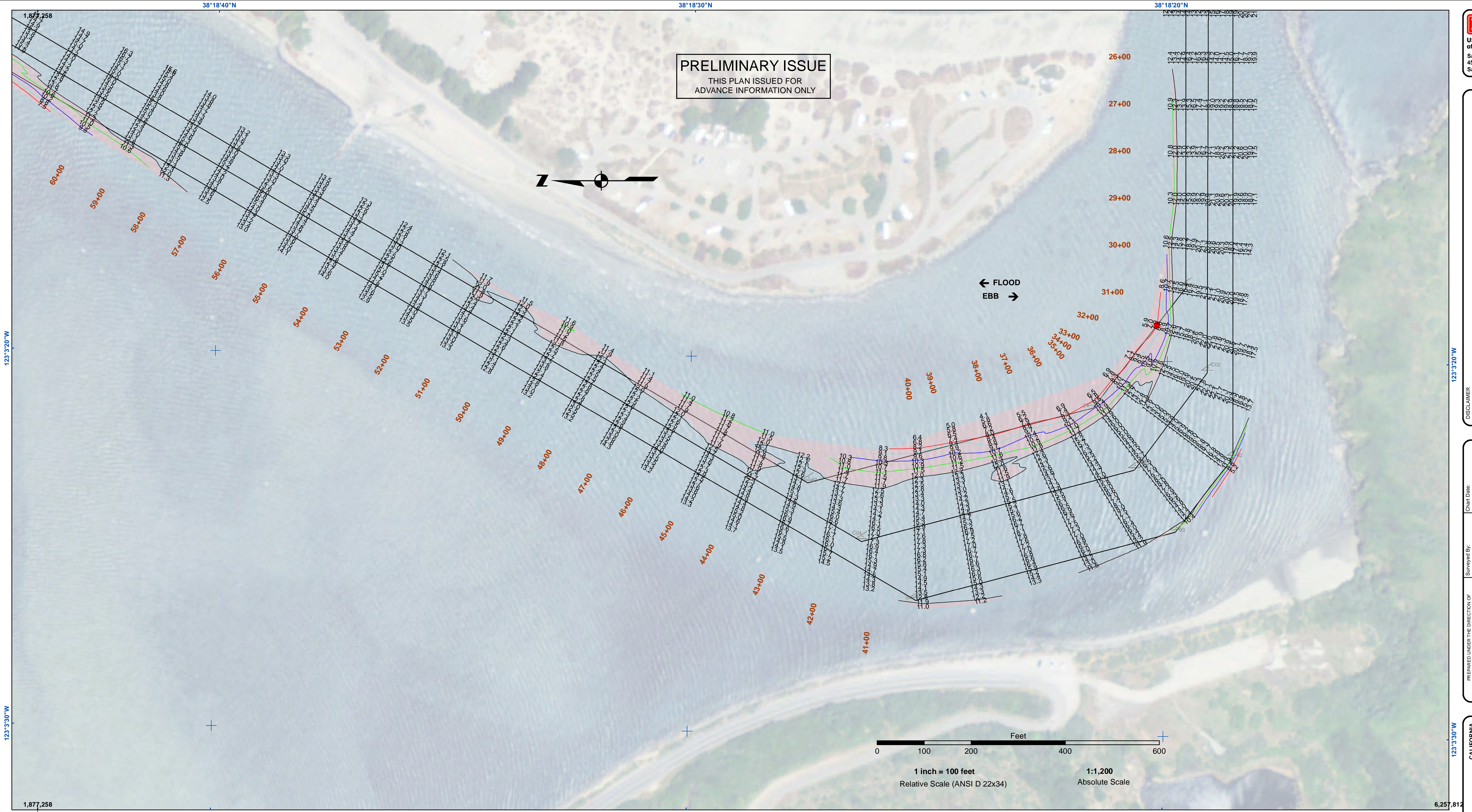
NOTES:
HORIZONTAL COORDINATE SYSTEM: NORTH AMERICAN DATUM OF 1983 (NAD83), PROJECTED TO THE STATE PLANE COORDINATE SYSTEM (SPCS), CALIFORNIA ZONE II. DISTANCE UNITS IN U.S. SURVEY FEET.
VERTICAL DATUM: SOUNDINGS ARE SHOWN IN FEET AND INDICATE DEPTHS BELOW MEAN LOWER LOW WATER.
THE INFORMATION DEPICTED ON THIS MAP REPRESENTS THE RESULTS OF A SURVEY CONDUCTED ON THE DATE INDICATED AND CAN ONLY BE CONSIDERED TO REPRESENT THE GENERAL CONDITION EXISTING AT THAT TIME.
PLANE GRID, BEARING AND COORDINATES ARE BASED ON THE STATE OF CALIFORNIA COORDINATE SYSTEM, LAMBERT CONFORMAL PROJECTION, ZONE II NAD 83, CALIFORNIA, AS DESCRIBED IN SPECIAL PUBLICATION NO. 235, PUBLISHED BY NATIONAL OCEAN SURVEY. BASE MAPS ARE USDA NAIP 2010.
*SHOALEST SOUNDING PER QUARTER PER REACH

DRAWING NOT TO BE USED FOR NAVIGATION. ONLY CHANNEL CONDITION AT DATE OF SURVEY. THE LOCATION OF ALL NAVIGATION AIDS ARE BASED ON INFORMATION PROVIDED BY THE U.S. COAST GUARD. BUOY LOCATIONS REPRESENT THE POSITION OF THE SINKER ONLY.
SURVEYED BY THE CORPS OF ENGINEERS.
SOUNDINGS TAKEN BY FATHOMETER AND ARE SHOWN TO THE NEAREST FOOT AND TENTHS OF A FOOT.
SOUNDINGS ARE BASED ON THE DATUM OF MEAN LOWER LOW WATER AT THE LOCALITY.
THE PROJECT DEPTH IS 12 FEET.
TIDE GAUGE AT BODEGA BAY COAST GUARD STATION DOCK BASED ON ELEVATION OF 17.50' MLLW ON COAST GUARD BRASS CAP PROPERTY CORNER. ELEVATION ESTABLISHED BY DIFFERENTIAL LEVELS RUN FROM "TIDAL 4 = ROAD" USED, 1941. ELEVATION 20.05' MLLW LOCATED IN THE TOWN OF BODEGA BAY.

CALIFORNIA
SONOMA COUNTY
BODEGA BAY CHANNEL
CONDITION SURVEY
24 SEPTEMBER 2021

Sheet Reference Number
1 of 7

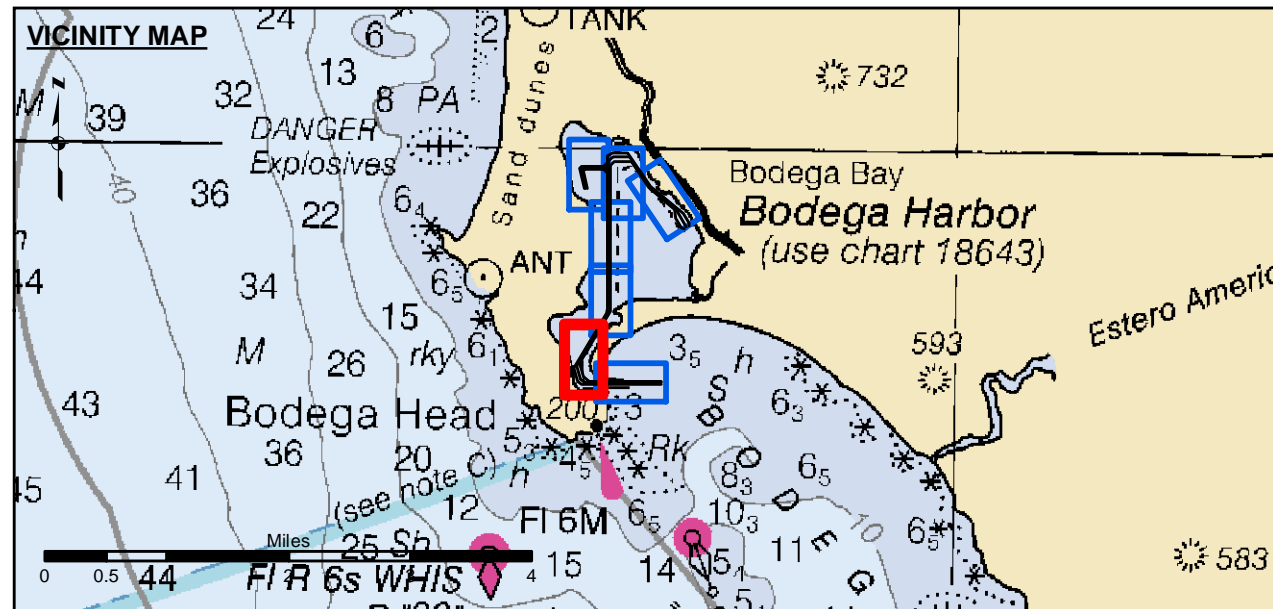
PRELIMINARY ISSUE
 THIS PLAN ISSUED FOR
 ADVANCE INFORMATION ONLY



DISCLAIMER
 The United States Government furnishes this information as a service to the public. It is not intended to be used for any purpose other than that for which it was prepared. The United States Government makes no warranty, expressed or implied, concerning the accuracy, completeness, or timeliness of the information. The user is responsible for the results of any application of the data for other than its intended purpose. The user is responsible for the results of any application of the data for other than its intended purpose. The user is responsible for the results of any application of the data for other than its intended purpose.

Prepared Under the Direction of	Kevin P. Arnett	Chart Date	Sep 27, 2021
Submitted	Hydro Survey Team Leader	Designed by	PDT
Recommended	Chief, Hydro Survey Section	Checked by	PDT
Approved	Chief, Construction Branch	Drawn by	PDT

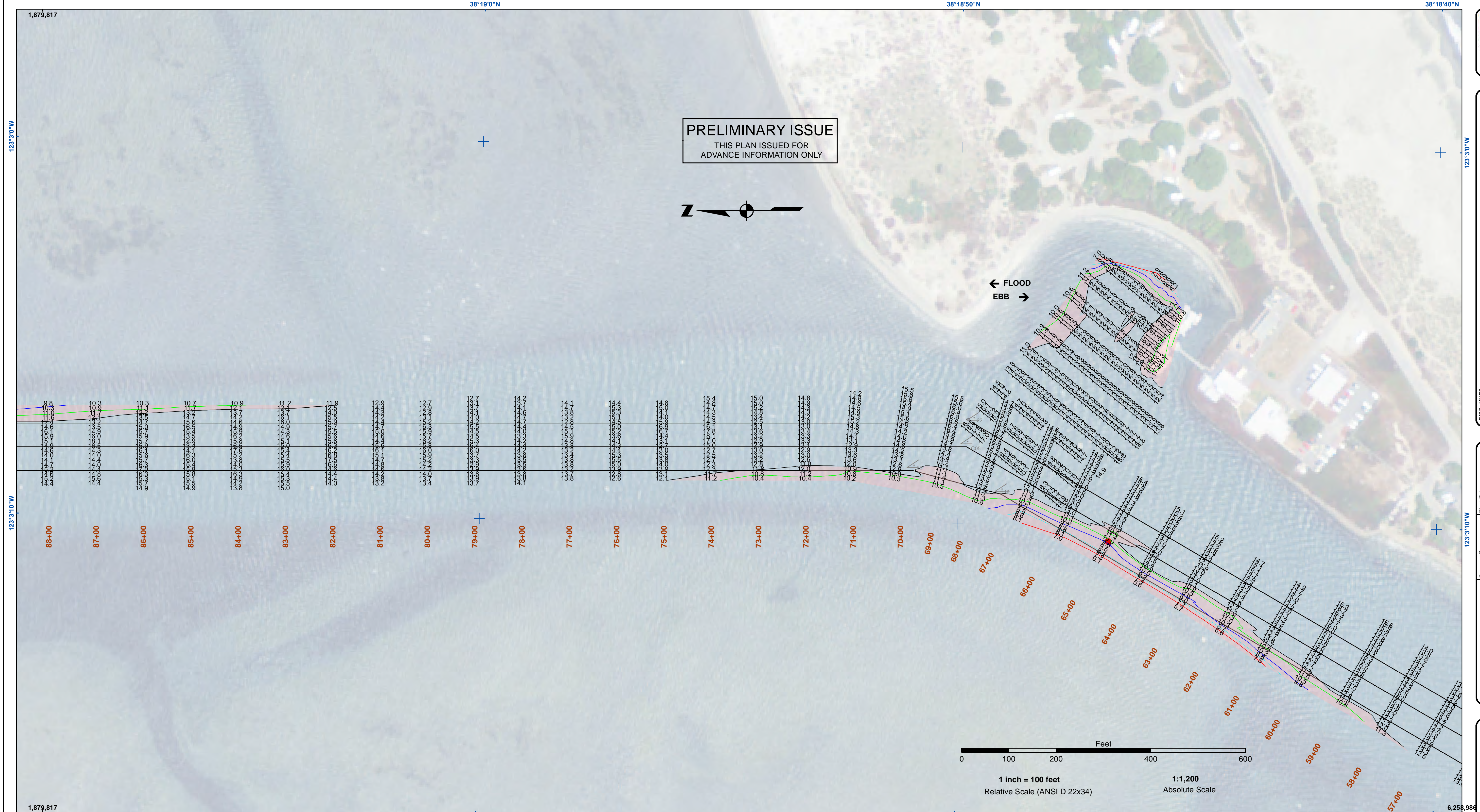
CALIFORNIA
 SONOMA COUNTY
BODEGA BAY CHANNEL
 CONDITION SURVEY
 24 SEPTEMBER 2021



Federal Navigation Channel	Beacon, General	Contours
Shoaling Area	Obstruction Point	
Placement Area	Navigation Buoy	
Anchorage Area	Navigation Buoy	
Wreck Area	Shoalest Sounding*	
Submerged Wreck		-12
Angle Point		-11
		-10
		-9
		-8

NOTES:
 HORIZONTAL COORDINATE SYSTEM:
 NORTH AMERICAN DATUM OF 1983 (NAD83), PROJECTED TO THE STATE PLANE COORDINATE SYSTEM (SPCS), CALIFORNIA ZONE II. DISTANCE UNITS IN U.S. SURVEY FEET.
 VERTICAL DATUM:
 SOUNDINGS ARE SHOWN IN FEET AND INDICATE DEPTHS BELOW MEAN LOWER LOW WATER.
 THE INFORMATION DEPICTED ON THIS MAP REPRESENTS THE RESULTS OF A SURVEY CONDUCTED ON THE DATE INDICATED AND CAN ONLY BE CONSIDERED TO REPRESENT THE GENERAL CONDITION EXISTING AT THAT TIME.
 PLANE GRID, BEARING AND COORDINATES ARE BASED ON THE STATE OF CALIFORNIA COORDINATE SYSTEM, LAMBERT CONFORMAL PROJECTION, ZONE II NAD 83, CALIFORNIA, AS DESCRIBED IN SPECIAL PUBLICATION NO. 235, PUBLISHED BY NATIONAL OCEAN SURVEY. BASE MAPS ARE USDA NAIP 2010.
 *SHOALEST SOUNDING PER QUARTER PER REACH

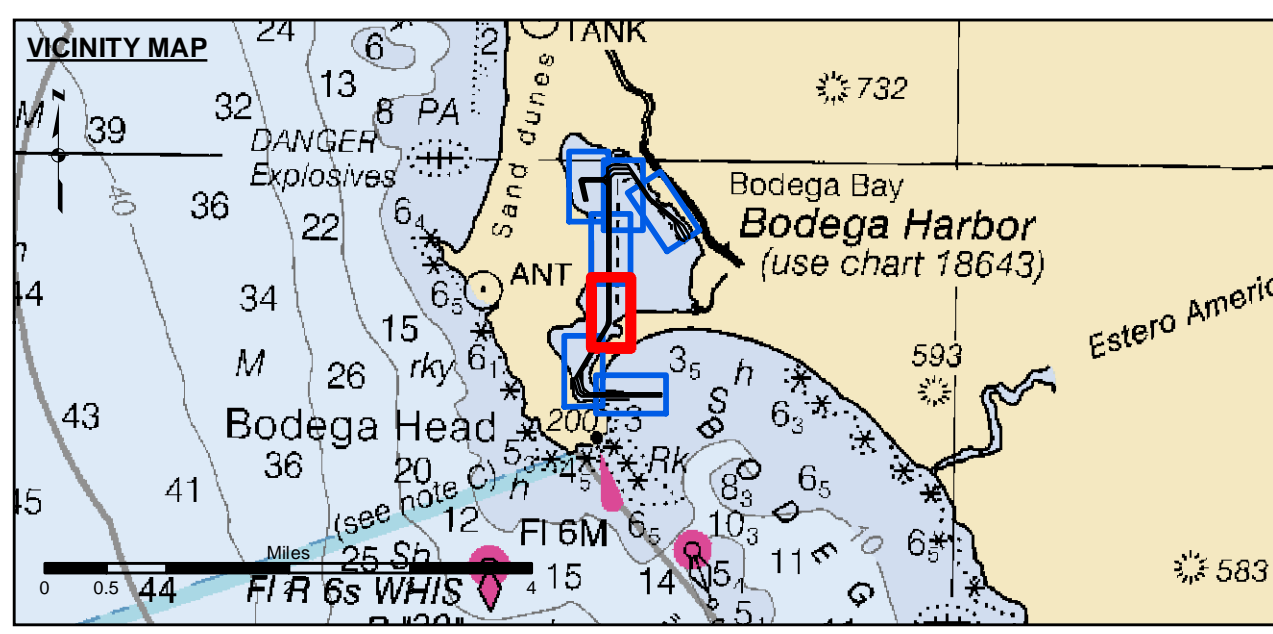
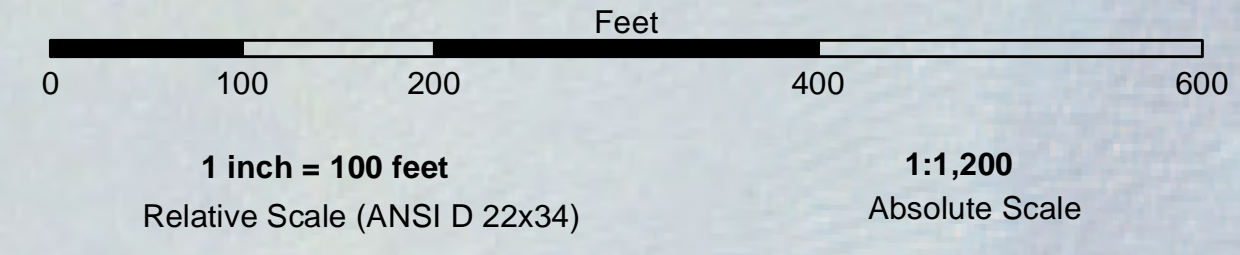
DRAWING NOT TO BE USED FOR NAVIGATION. ONLY CHANNEL CONDITION AT DATE OF SURVEY. THE LOCATION OF ALL NAVIGATION AIDS ARE BASED ON INFORMATION PROVIDED BY THE U.S. COAST GUARD. BUOY LOCATIONS REPRESENT THE POSITION OF THE SINKER ONLY.
 SURVEYED BY THE CORPS OF ENGINEERS.
 SOUNDINGS TAKEN BY FATHOMETER AND ARE SHOWN TO THE NEAREST FOOT AND TENTHS OF A FOOT.
 SOUNDINGS ARE BASED ON THE DATUM OF MEAN LOWER LOW WATER AT THE LOCALITY.
 THE PROJECT DEPTH IS 12 FEET.
 TIDE GAUGE AT BODEGA BAY COAST GUARD STATION DOCK BASED ON ELEVATION OF 17.50' MLLW ON COAST GUARD BRASS CAP PROPERTY CORNER. ELEVATION ESTABLISHED BY DIFFERENTIAL LEVELS RUN FROM "TIDAL 4 = ROAD" USED, 1941. ELEVATION 20.05' MLLW LOCATED IN THE TOWN OF BODEGA BAY.



PRELIMINARY ISSUE
THIS PLAN ISSUED FOR
ADVANCE INFORMATION ONLY



← FLOOD
EBB →



- Federal Navigation Channel
- Shoaling Area
- Placement Area
- Anchorage Area
- Wreck Area
- Submerged Wreck
- Angle Point
- Beacon, General
- Obstruction Point
- Navigation Buoy
- Navigation Buoy
- Shoalest Sounding*
- Contours**
- 12
- 11
- 10
- 9
- 8

NOTES:
HORIZONTAL COORDINATE SYSTEM:
NORTH AMERICAN DATUM OF 1983 (NAD83), PROJECTED TO THE STATE PLANE COORDINATE SYSTEM (SPCS), CALIFORNIA ZONE II. DISTANCE UNITS IN U.S. SURVEY FEET.

VERTICAL DATUM:
SOUNDINGS ARE SHOWN IN FEET AND INDICATE DEPTHS BELOW MEAN LOWER LOW WATER.

THE INFORMATION DEPICTED ON THIS MAP REPRESENTS THE RESULTS OF A SURVEY CONDUCTED ON THE DATE INDICATED AND CAN ONLY BE CONSIDERED TO REPRESENT THE GENERAL CONDITION EXISTING AT THAT TIME.

PLANE GRID, BEARING AND COORDINATES ARE BASED ON THE STATE OF CALIFORNIA COORDINATE SYSTEM, LAMBERT CONFORMAL PROJECTION, ZONE II NAD 83, CALIFORNIA, AS DESCRIBED IN SPECIAL PUBLICATION NO. 235, PUBLISHED BY NATIONAL OCEAN SURVEY. BASE MAPS ARE USDA NAIP 2010.

*SHOALEST SOUNDING PER QUARTER PER REACH

DRAWING NOT TO BE USED FOR NAVIGATION. ONLY CHANNEL CONDITION AT DATE OF SURVEY. THE LOCATION OF ALL NAVIGATION AIDS ARE BASED ON INFORMATION PROVIDED BY THE U.S. COAST GUARD. BUOY LOCATIONS REPRESENT THE POSITION OF THE SINKER ONLY.

SURVEYED BY THE CORPS OF ENGINEERS.

SOUNDINGS TAKEN BY FATHOMETER AND ARE SHOWN TO THE NEAREST FOOT AND TENTHS OF A FOOT.

SOUNDINGS ARE BASED ON THE DATUM OF MEAN LOWER LOW WATER AT THE LOCALITY.

THE PROJECT DEPTH IS 12 FEET.

TIDE GAUGE AT BODEGA BAY COAST GUARD STATION DOCK BASED ON ELEVATION OF 17.50' MLLW ON COAST GUARD BRASS CAP PROPERTY CORNER. ELEVATION ESTABLISHED BY DIFFERENTIAL LEVELS RUN FROM "TIDAL 4 = ROAD" USED, 1941. ELEVATION 20.05' MLLW LOCATED IN THE TOWN OF BODEGA BAY.

DISCLAIMER
The United States Government furnishes this information for the general information of the recipient and does not warrant, express or implied, the accuracy, completeness, or reliability of the information. The recipient is responsible for the use of the information for any purpose other than the intended purpose. The recipient is responsible for the use of the information for any purpose other than the intended purpose. The recipient is responsible for the use of the information for any purpose other than the intended purpose.

Prepared Under the Direction of	Chart Date
LT COLONEL C.E. DISTRICT ENGINEER	Sep 30, 2021
Submitted:	Plotted By:
Hydro Survey Team Leader	PDT
Recommended:	Checked By:
Chief, Hydro Survey Section	PDT
Approved:	Drawn by:
Chief, Construction Branch	PDT

CALIFORNIA
SONOMA COUNTY
BODEGA BAY CHANNEL
CONDITION SURVEY
24 SEPTEMBER 2021

Sheet Reference Number
3 of 7



US Army Corps of Engineers
San Francisco District
450 Golden Gate
San Francisco, CA 94102

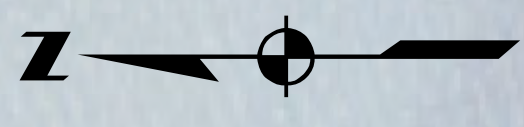
DISCLAIMER
Access Constraints: The United States Government furnishes this information as a service to the public and does not express any opinion or implied warranty concerning the accuracy, completeness, or timeliness of the data furnished. The United States Government makes no liability whatsoever to any person by reason of any use made thereof. These data belong to the Government. Therefore the recipient may not transfer these data to others without also transferring this disclaimer.

Prepared Under the Direction of	Surveyed By:	Chart Date:
LT COLONEL C.E. DISTRICT ENGINEER	KEVIN P. ARNETT	Sep 27, 2021
Subject:	Plotted By:	Designed by:
Hydro Survey Team Leader	PDT	PDT
Recommended:	Checked By:	Drawn by:
Chief, Hydro Survey Section	PDT	PDT
Approved:	Chief, Construction Branch	

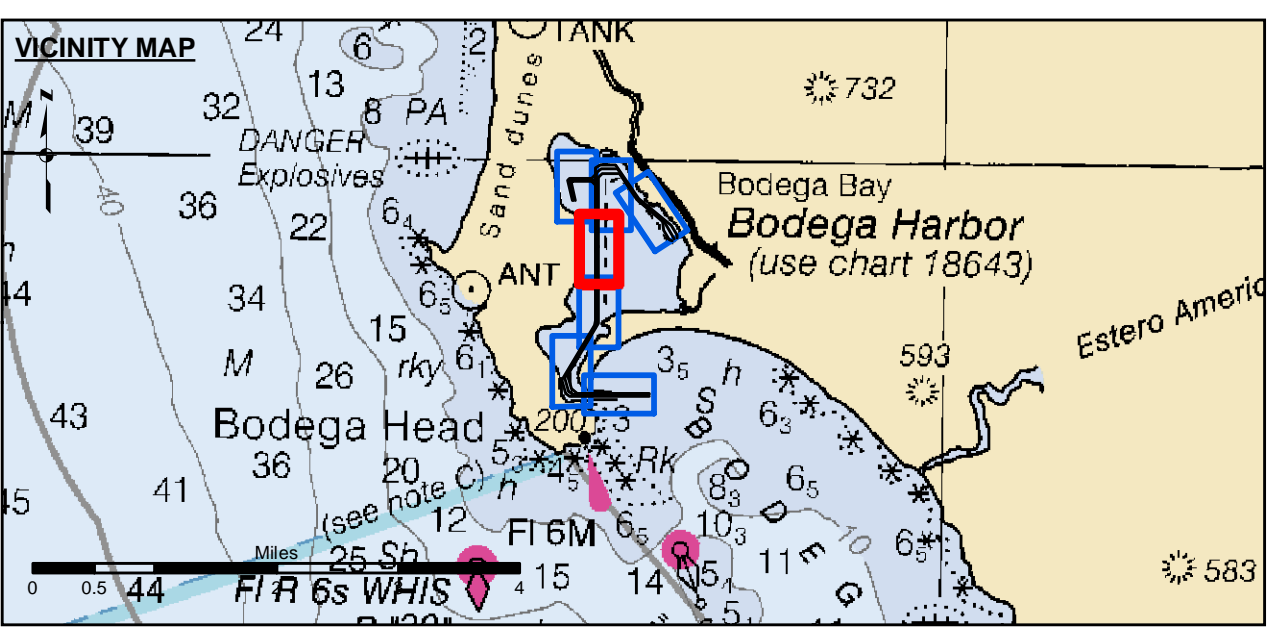
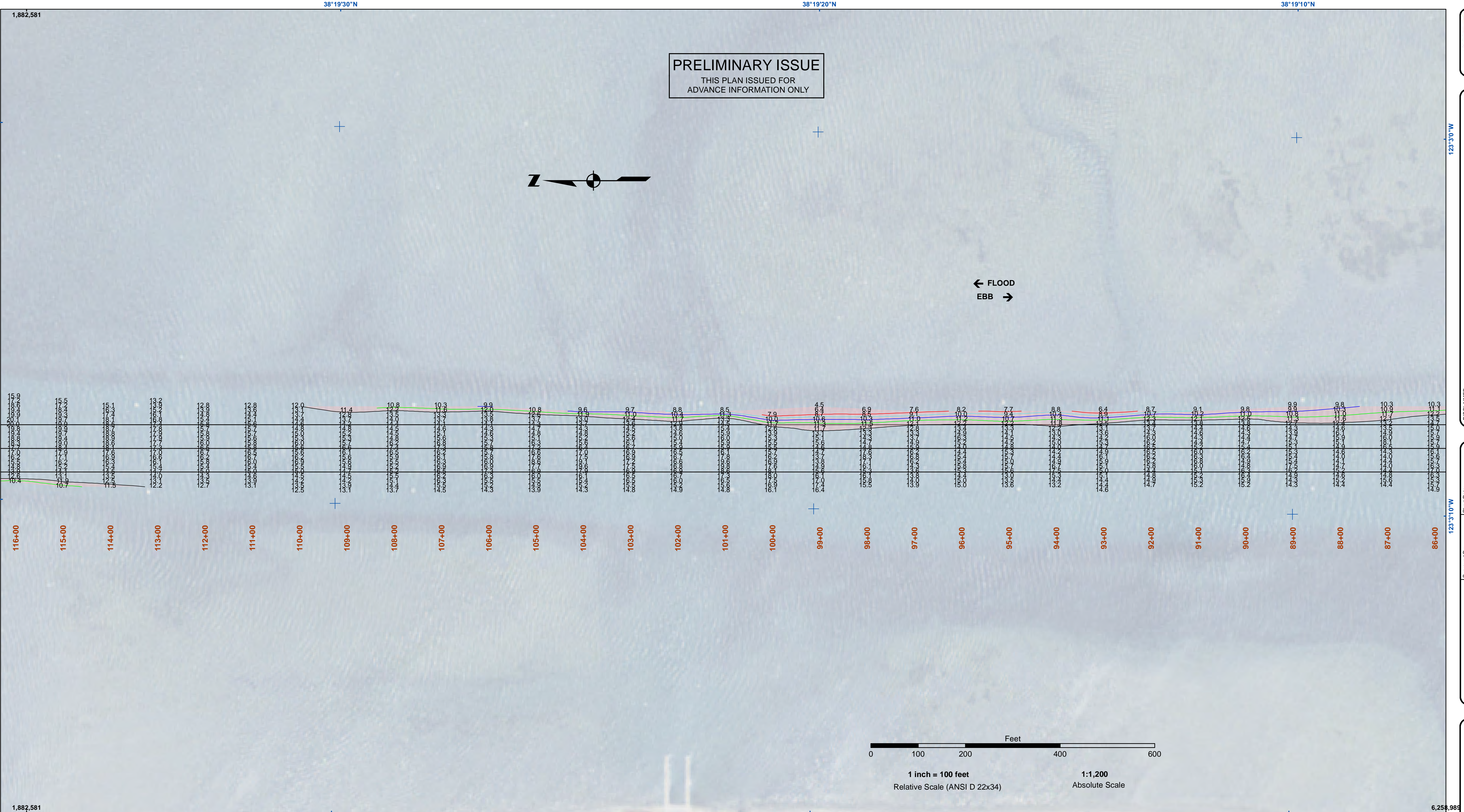
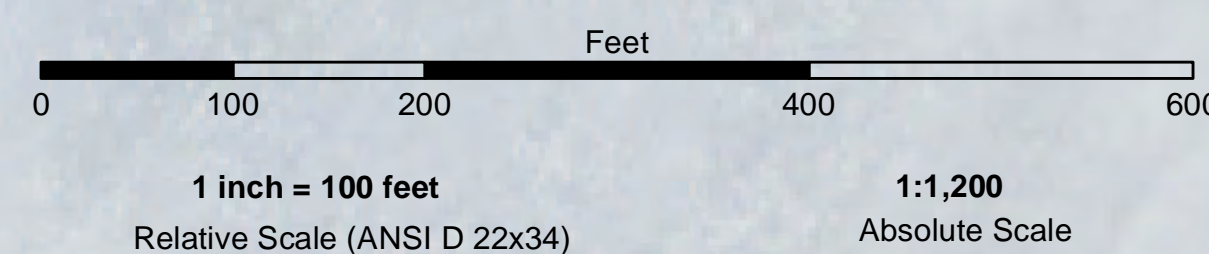
CALIFORNIA
SONOMA COUNTY
BODEGA BAY CHANNEL
CONDITION SURVEY
24 SEPTEMBER 2021

Sheet
Reference
Number
4 of 7

PRELIMINARY ISSUE
THIS PLAN ISSUED FOR
ADVANCE INFORMATION ONLY



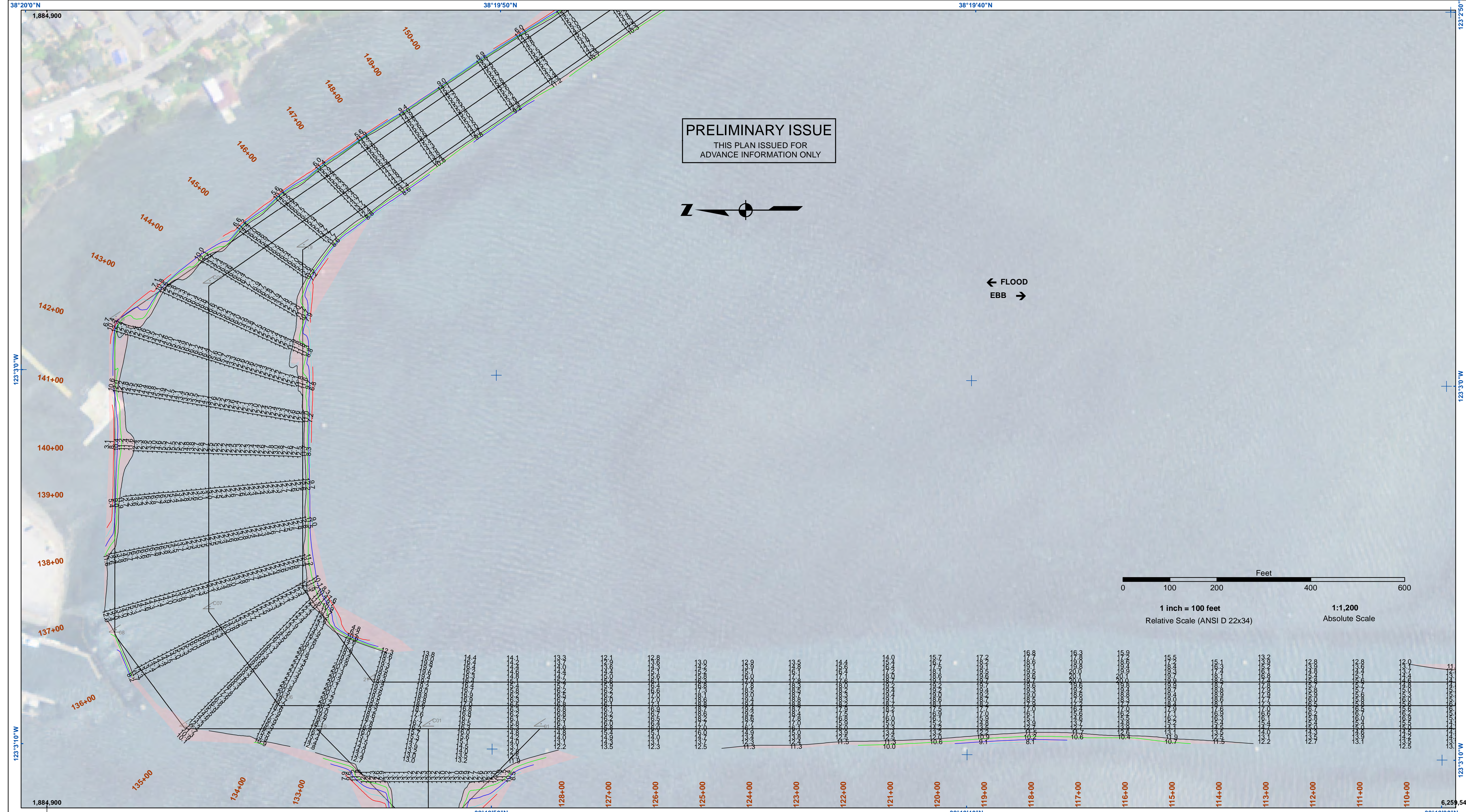
← FLOOD
EBB →



- Federal Navigation Channel
- Shoaling Area
- Placement Area
- Anchorage Area
- Wreck Area
- Submerged Wreck
- Angle Point
- Beacon, General
- Obstruction Point
- Navigation Buoy
- Navigation Buoy
- Shoalest Sounding*
- Contours**
- 12
- 11
- 10
- 9
- 8

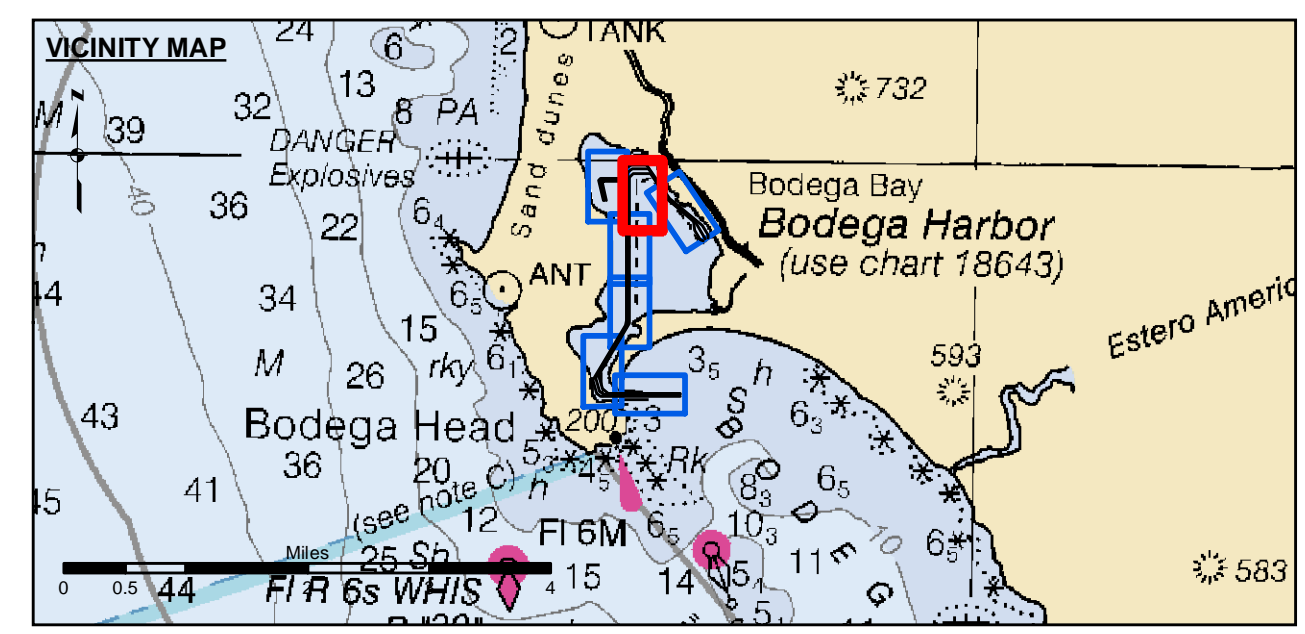
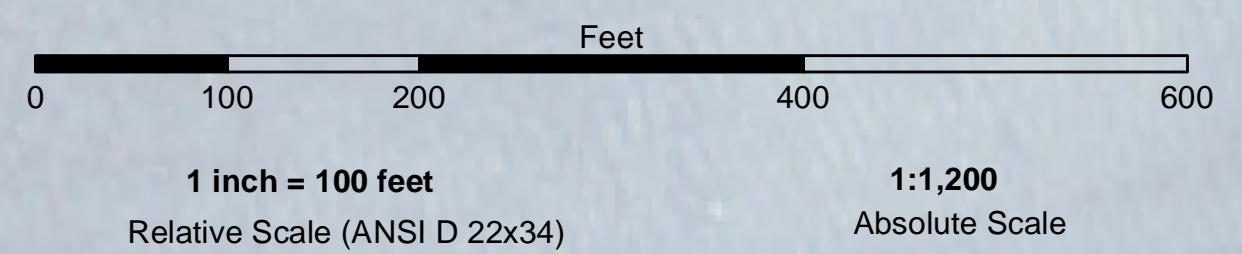
NOTES:
HORIZONTAL COORDINATE SYSTEM:
NORTH AMERICAN DATUM OF 1983 (NAD83), PROJECTED TO THE STATE PLANE COORDINATE SYSTEM (SPCS), CALIFORNIA ZONE II. DISTANCE UNITS IN U.S. SURVEY FEET.
VERTICAL DATUM:
SOUNDINGS ARE SHOWN IN FEET AND INDICATE DEPTHS BELOW MEAN LOWER LOW WATER.
THE INFORMATION DEPICTED ON THIS MAP REPRESENTS THE RESULTS OF A SURVEY CONDUCTED ON THE DATE INDICATED AND CAN ONLY BE CONSIDERED TO REPRESENT THE GENERAL CONDITION EXISTING AT THAT TIME.
PLANE GRID, BEARING AND COORDINATES ARE BASED ON THE STATE OF CALIFORNIA COORDINATE SYSTEM, LAMBERT CONFORMAL PROJECTION, ZONE II NAD 83, CALIFORNIA, AS DESCRIBED IN SPECIAL PUBLICATION NO. 235, PUBLISHED BY NATIONAL OCEAN SURVEY. BASE MAPS ARE USDA NAIP 2010.
*SHOALEST SOUNDING PER QUARTER PER REACH

DRAWING NOT TO BE USED FOR NAVIGATION. ONLY CHANNEL CONDITION AT DATE OF SURVEY.
THE LOCATION OF ALL NAVIGATION AIDS ARE BASED ON INFORMATION PROVIDED BY THE U.S. COAST GUARD. BUOY LOCATIONS REPRESENT THE POSITION OF THE SINKER ONLY.
SURVEYED BY THE CORPS OF ENGINEERS.
SOUNDINGS TAKEN BY FATHOMETER AND ARE SHOWN TO THE NEAREST FOOT AND TENTHS OF A FOOT.
SOUNDINGS ARE BASED ON THE DATUM OF MEAN LOWER LOW WATER AT THE LOCALITY.
THE PROJECT DEPTH IS 12 FEET.
TIDE GAUGE AT BODEGA BAY COAST GUARD STATION DOCK BASED ON ELEVATION OF 17.50' MLLW ON COAST GUARD BRASS CAP PROPERTY CORNER. ELEVATION ESTABLISHED BY DIFFERENTIAL LEVELS RUN FROM "TIDAL 4 = ROAD" USED, 1941. ELEVATION 20.05' MLLW LOCATED IN THE TOWN OF BODEGA BAY.



DISCLAIMER
 The United States Government furnishes this information as a public service. It is not intended to be used for any purpose other than that for which it was prepared. The United States Government makes no warranty, expressed or implied, concerning the accuracy, completeness, or timeliness of the information. The user is responsible for the results of any application of the data for other than its intended purpose. The United States Government shall not be held liable for any damages, including consequential damages, arising from the use of this information. These data belong to the Government. Therefore, the recipient may not transfer these data to others without also transferring this disclaimer.

Chart Date:	Sep 30, 2021
Designed by:	PDT
Drawn by:	PDT
Checked by:	PDT
Approved:	Chief, Construction Branch
Plotted By:	PDT
Surveyed By:	KEVIN P. ARNETT
Prepared Under the Direction of:	LT COLONEL C.E. DISTRICT ENGINEER
Submitted:	Hydro Survey Team Leader
Recommended:	Chief, Hydro Survey Section
Approved:	Chief, Construction Branch



- Federal Navigation Channel
- Shoaling Area
- Placement Area
- Anchorage Area
- Wreck Area
- Submerged Wreck
- Angle Point
- Beacon, General
- Obstruction Point
- Navigation Buoy
- Navigation Buoy
- Shoalest Sounding*
- Contours
- 12
- 11
- 10
- 9
- 8

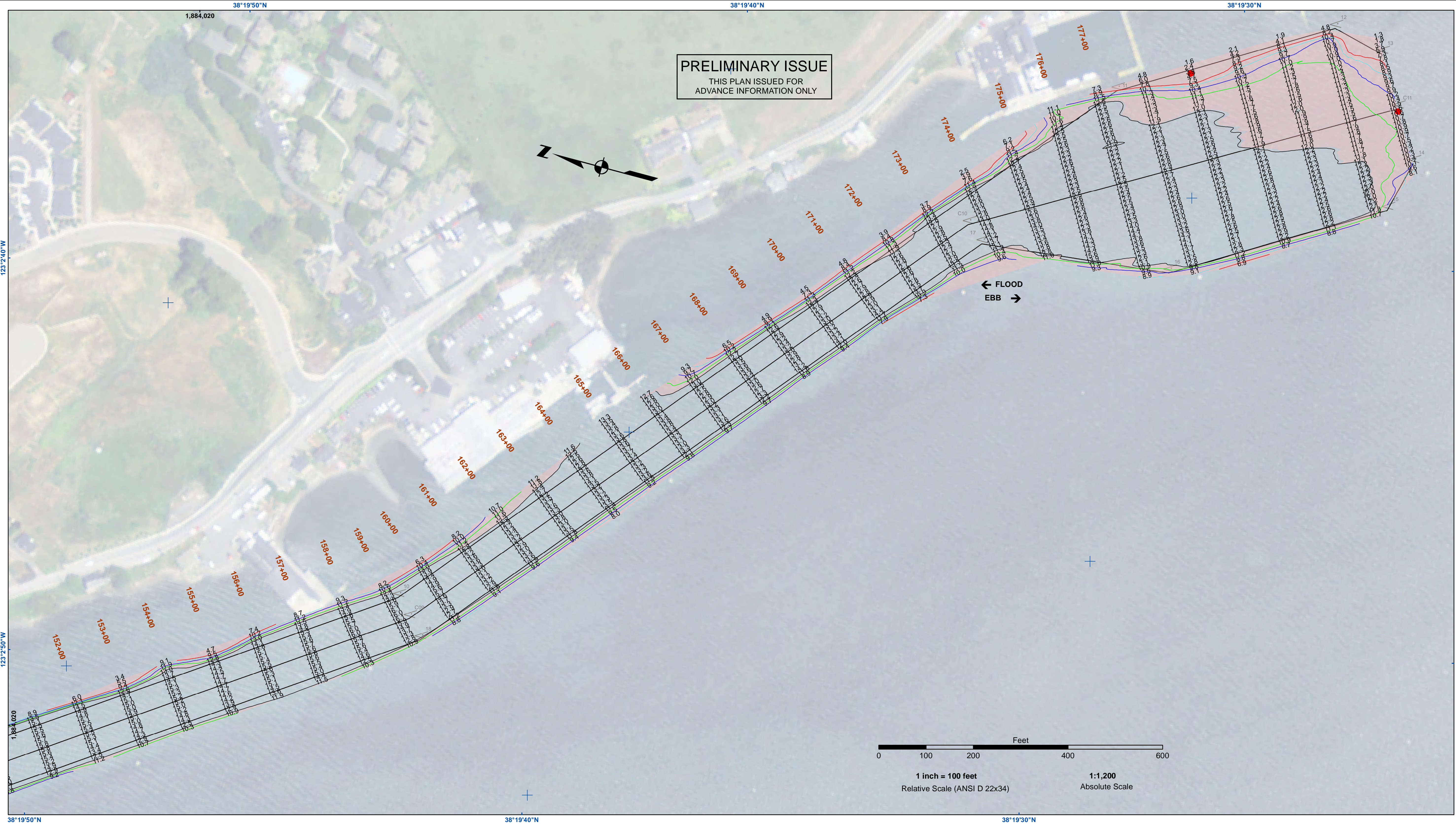
NOTES:
 HORIZONTAL COORDINATE SYSTEM:
 NORTH AMERICAN DATUM OF 1983 (NAD83), PROJECTED TO THE STATE PLANE COORDINATE SYSTEM (SPCS), CALIFORNIA ZONE II. DISTANCE UNITS IN U.S. SURVEY FEET.
 VERTICAL DATUM:
 SOUNDINGS ARE SHOWN IN FEET AND INDICATE DEPTHS BELOW MEAN LOWER LOW WATER.
 THE INFORMATION DEPICTED ON THIS MAP REPRESENTS THE RESULTS OF A SURVEY CONDUCTED ON THE DATE INDICATED AND CAN ONLY BE CONSIDERED TO REPRESENT THE GENERAL CONDITION EXISTING AT THAT TIME.
 PLANE GRID, BEARING AND COORDINATES ARE BASED ON THE STATE OF CALIFORNIA COORDINATE SYSTEM, LAMBERT CONFORMAL PROJECTION, ZONE II NAD 83, CALIFORNIA, AS DESCRIBED IN SPECIAL PUBLICATION NO. 235, PUBLISHED BY NATIONAL OCEAN SURVEY. BASE MAPS ARE USDA NAIP 2010.
 *SHOALEST SOUNDING PER QUARTER PER REACH

DRAWING NOT TO BE USED FOR NAVIGATION. ONLY CHANNEL CONDITION AT DATE OF SURVEY.
 THE LOCATION OF ALL NAVIGATION AIDS ARE BASED ON INFORMATION PROVIDED BY THE U.S. COAST GUARD. BUOY LOCATIONS REPRESENT THE POSITION OF THE SINKER ONLY.
 SURVEYED BY THE CORPS OF ENGINEERS.
 SOUNDINGS TAKEN BY FATHOMETER AND ARE SHOWN TO THE NEAREST FOOT AND TENTHS OF A FOOT.
 SOUNDINGS ARE BASED ON THE DATUM OF MEAN LOWER LOW WATER AT THE LOCALITY.
 THE PROJECT DEPTH IS 12 FEET.
 TIDE GAUGE AT BODEGA BAY COAST GUARD STATION DOCK BASED ON ELEVATION OF 17.50' MLLW ON COAST GUARD BRASS CAP PROPERTY CORNER. ELEVATION ESTABLISHED BY DIFFERENTIAL LEVELS RUN FROM "TIDAL 4 = ROAD" USED, 1941. ELEVATION 20.05' MLLW LOCATED IN THE TOWN OF BODEGA BAY.

CALIFORNIA
 SONOMA COUNTY
BODEGA BAY CHANNEL
 CONDITION SURVEY
 24 SEPTEMBER 2021

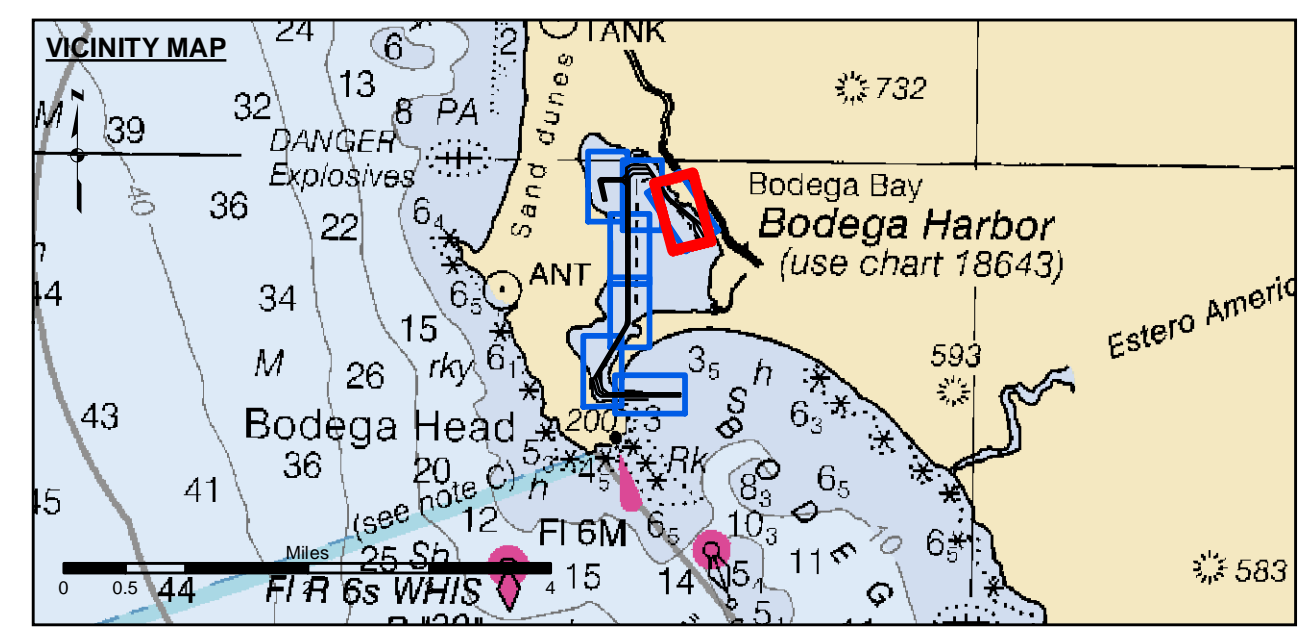
Sheet Reference Number
5 of 7

PRELIMINARY ISSUE
 THIS PLAN ISSUED FOR
 ADVANCE INFORMATION ONLY



DISCLAIMER
 The United States Government furnishes this information as a service to the public. It is not intended to be used for any purpose other than the intended purpose. The user is responsible for the results of any application of the data for other than the intended purpose. The United States Government makes no warranty, expressed or implied, concerning the accuracy, completeness, or reliability of the data furnished. The United States Government assumes no liability whatsoever for any use made thereof. These data belong to the Government. Therefore the user shall not be held liable for any damage or loss of property resulting from the use of these data to others without also transferring this disclaimer.

Prepared Under the Direction of	Chart Date
KEVIN P. ARNETT	Sep 27, 2021
Planned By	Designed by
PDT	PDT
Checked By	Drawn by
PDT	PDT

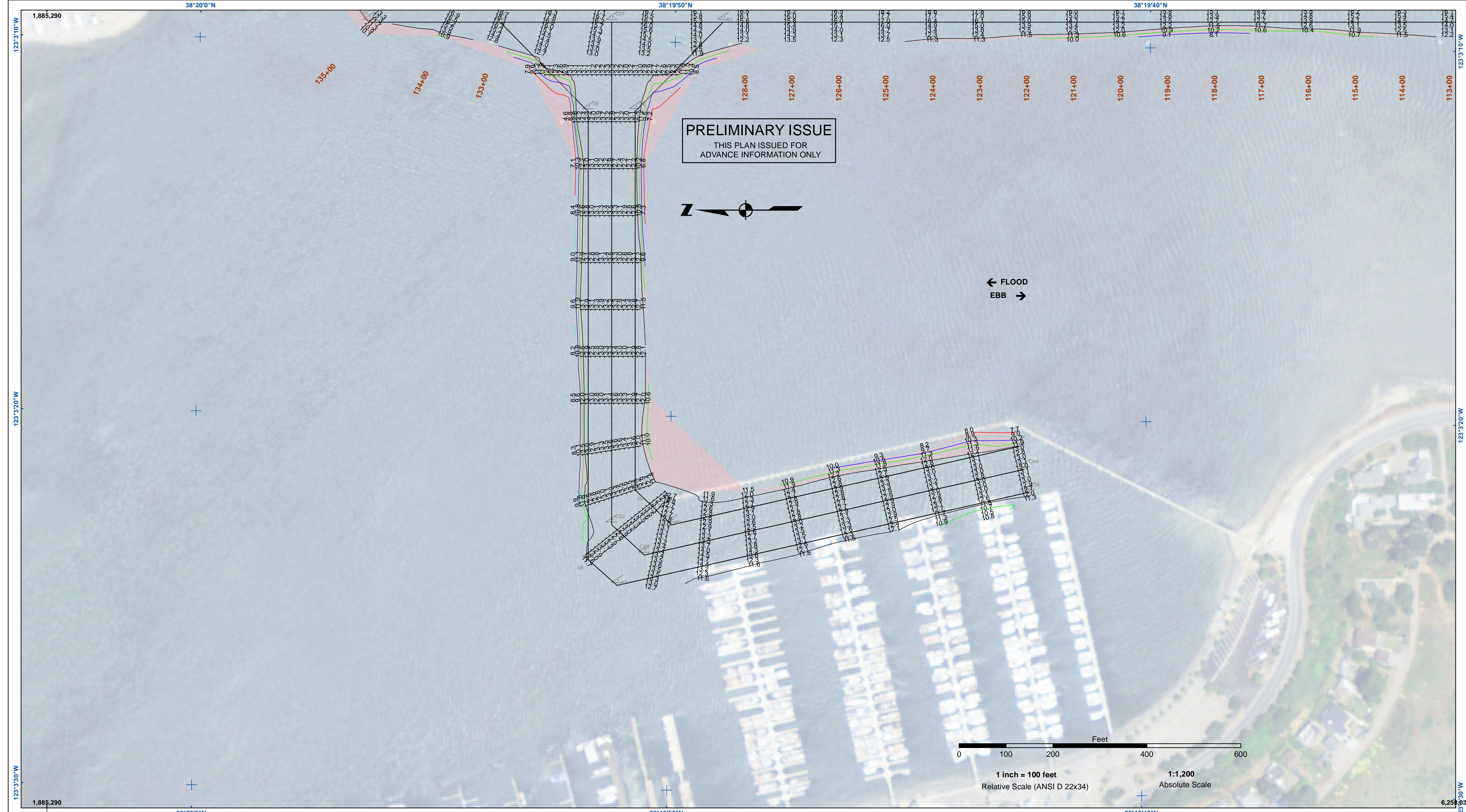


Federal Navigation Channel	Beacon, General	Contours
Shoaling Area	Obstruction Point	
Placement Area	Navigation Buoy	
Anchorage Area	Navigation Buoy	
Wreck Area	Shoalest Sounding*	
Submerged Wreck		-12
Angle Point		-11
		-10
		-9
		-8

NOTES:
 HORIZONTAL COORDINATE SYSTEM:
 NORTH AMERICAN DATUM OF 1983 (NAD83), PROJECTED TO THE STATE PLANE COORDINATE SYSTEM (SPCS), CALIFORNIA ZONE II. DISTANCE UNITS IN U.S. SURVEY FEET.
 VERTICAL DATUM:
 SOUNDINGS ARE SHOWN IN FEET AND INDICATE DEPTHS BELOW MEAN LOWER LOW WATER.
 THE INFORMATION DEPICTED ON THIS MAP REPRESENTS THE RESULTS OF A SURVEY CONDUCTED ON THE DATE INDICATED AND CAN ONLY BE CONSIDERED TO REPRESENT THE GENERAL CONDITION EXISTING AT THAT TIME.
 PLANE GRID, BEARING AND COORDINATES ARE BASED ON THE STATE OF CALIFORNIA COORDINATE SYSTEM, LAMBERT CONFORMAL PROJECTION, ZONE II NAD 83, CALIFORNIA, AS DESCRIBED IN SPECIAL PUBLICATION NO. 235, PUBLISHED BY NATIONAL OCEAN SURVEY. BASE MAPS ARE USDA NAIP 2010.
 *SHOALEST SOUNDING PER QUARTER PER REACH

DRAWING NOT TO BE USED FOR NAVIGATION. ONLY CHANNEL CONDITION AT DATE OF SURVEY. THE LOCATION OF ALL NAVIGATION AIDS ARE BASED ON INFORMATION PROVIDED BY THE U.S. COAST GUARD. BUOY LOCATIONS REPRESENT THE POSITION OF THE SINKER ONLY.
 SURVEYED BY THE CORPS OF ENGINEERS.
 SOUNDINGS TAKEN BY FATHOMETER AND ARE SHOWN TO THE NEAREST FOOT AND TENTHS OF A FOOT.
 SOUNDINGS ARE BASED ON THE DATUM OF MEAN LOWER LOW WATER AT THE LOCALITY.
 THE PROJECT DEPTH IS 12 FEET.
 TIDE GAUGE AT BODEGA BAY COAST GUARD STATION DOCK BASED ON ELEVATION OF 17.50' MLLW ON COAST GUARD BRASS CAP PROPERTY CORNER. ELEVATION ESTABLISHED BY DIFFERENTIAL LEVELS RUN FROM "TIDAL 4 = ROAD" USED, 1941. ELEVATION 20.05' MLLW LOCATED IN THE TOWN OF BODEGA BAY.

CALIFORNIA
 SONOMA COUNTY
BODEGA BAY CHANNEL
 CONDITION SURVEY
 24 SEPTEMBER 2021



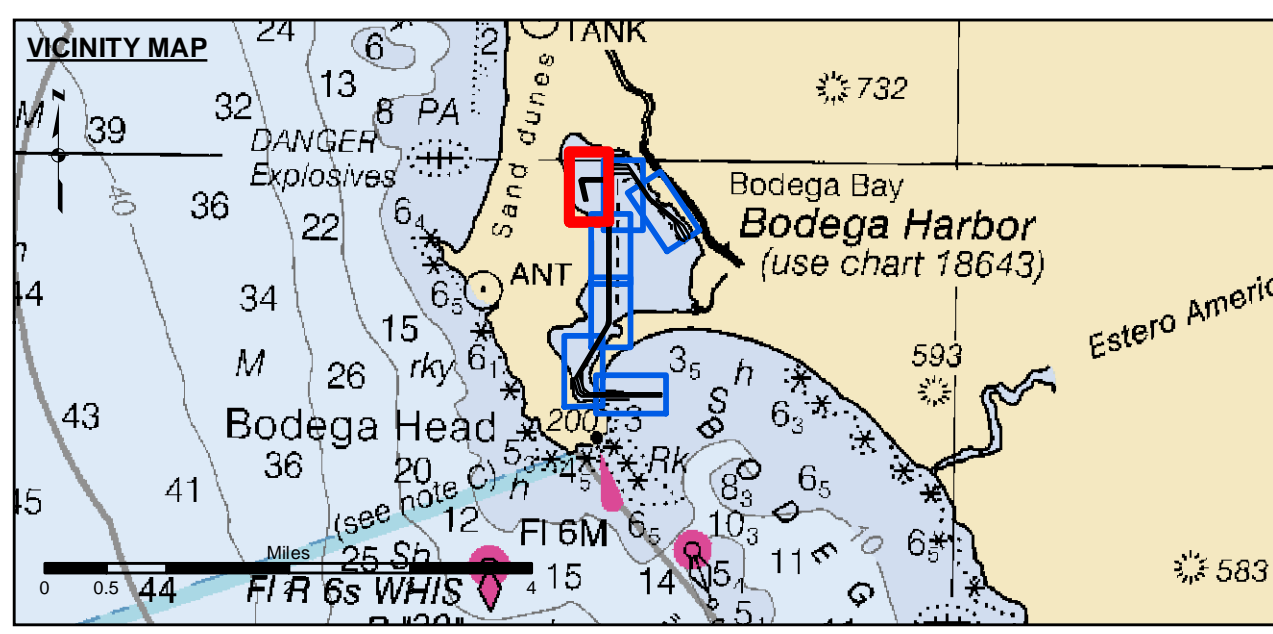
US Army Corps of Engineers
San Francisco District
450 Golden Gate
San Francisco, CA 94102

DISCLAIMER
The United States Government furnishes this information for your use only. It is not intended to be used for any other purpose than that for which it was prepared. The United States Government makes no warranty, expressed or implied, concerning the accuracy, completeness, or timeliness of the information. The user is responsible for the results of any application of the data for other than the intended purpose. These data belong to the Government. Therefore, the user shall not release these data to others without also transferring this disclaimer.

PREPARED UNDER THE DIRECTION OF KEVIN P. ARNETT LT COLONEL, C.E., DISTRICT ENGINEER	Chart Date: Sep 30, 2021
Subject: Hydro Survey Team Leader	Designed by: PDT
Recommended by: Chief, Hydro Survey Section	Plotted by: PDT
Approved by: Chief, Construction Branch	Checked by: PDT
	Drawn by: PDT

CALIFORNIA
SONOMA COUNTY
BODEGA BAY CHANNEL
CONDITION SURVEY
24 SEPTEMBER 2021

Sheet Reference Number
7 of 7



Federal Navigation Channel	Beacon, General	Contours
Shoaling Area	Obstruction Point	-12
Placement Area	Navigation Buoy	-11
Anchorage Area	Navigation Buoy	-10
Wreck Area	Shoalest Sounding*	-9
Submerged Wreck		-8
Angle Point		

NOTES:
HORIZONTAL COORDINATE SYSTEM:
NORTH AMERICAN DATUM OF 1983 (NAD83), PROJECTED TO THE STATE PLANE COORDINATE SYSTEM (SPCS), CALIFORNIA ZONE II. DISTANCE UNITS IN U.S. SURVEY FEET.
VERTICAL DATUM:
SOUNDINGS TAKEN BY FATHOMETER AND ARE SHOWN TO THE NEAREST FOOT AND TENTHS OF A FOOT.
THE INFORMATION DEPICTED ON THIS MAP REPRESENTS THE RESULTS OF A SURVEY CONDUCTED ON THE DATE INDICATED AND CAN ONLY BE CONSIDERED TO REPRESENT THE GENERAL CONDITION EXISTING AT THAT TIME.
PLANE GRID, BEARING AND COORDINATES ARE BASED ON THE STATE OF CALIFORNIA COORDINATE SYSTEM, LAMBERT CONFORMAL PROJECTION, ZONE II NAD 83, CALIFORNIA, AS DESCRIBED IN SPECIAL PUBLICATION NO. 235, PUBLISHED BY NATIONAL OCEAN SURVEY. BASE MAPS ARE USDA NAIP 2010.
*SHOALEST SOUNDING PER QUARTER PER REACH

DRAWING NOT TO BE USED FOR NAVIGATION. ONLY CHANNEL CONDITION AT DATE OF SURVEY. THE LOCATION OF ALL NAVIGATION AIDS ARE BASED ON INFORMATION PROVIDED BY THE U.S. COAST GUARD. BUOY LOCATIONS REPRESENT THE POSITION OF THE SINKER ONLY.
SURVEYED BY THE CORPS OF ENGINEERS.
SOUNDINGS TAKEN BY FATHOMETER AND ARE SHOWN TO THE NEAREST FOOT AND TENTHS OF A FOOT.
SOUNDINGS ARE BASED ON THE DATUM OF MEAN LOWER LOW WATER AT THE LOCALITY.
THE PROJECT DEPTH IS 12 FEET.
TIDE GAUGE AT BODEGA BAY COAST GUARD STATION DOCK BASED ON ELEVATION OF 17.50' MLLW ON COAST GUARD BRASS CAP PROPERTY CORNER. ELEVATION ESTABLISHED BY DIFFERENTIAL LEVELS RUN FROM "TIDAL 4 = ROAD" USED, 1941. ELEVATION 20.05' MLLW LOCATED IN THE TOWN OF BODEGA BAY.